

ALLIGHTSYKES

QUIET SOLUTION (QSM) RANGE



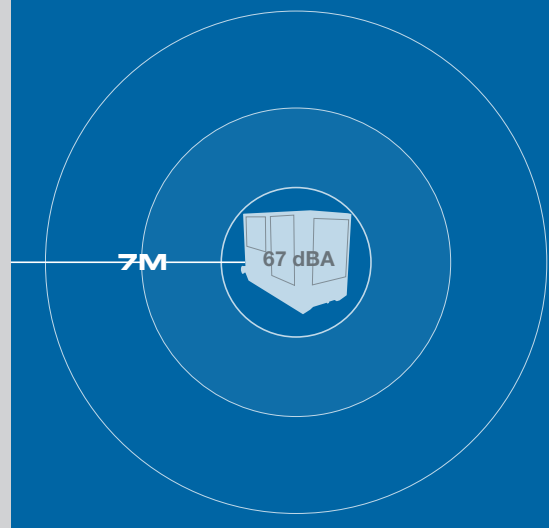
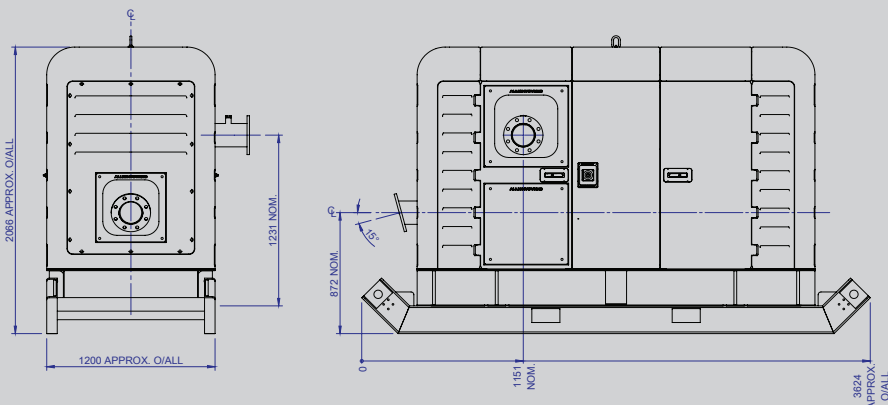
WHISPER QUIET RANGE OF PUMPS DESIGNED FOR NOISE SENSITIVE APPLICATIONS.

QSM pumps have been designed to comply with the noise output regulations of governing worksites and urban areas.

Large lockable access doors have been designed with fast routine maintenance in mind. External drain plugs are fitted for fuel, oil and water.

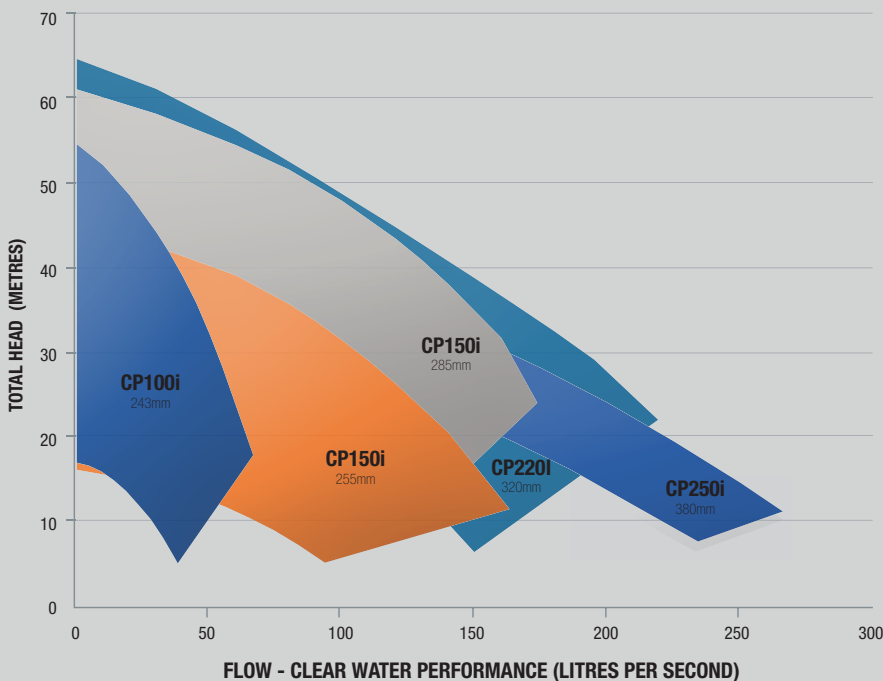
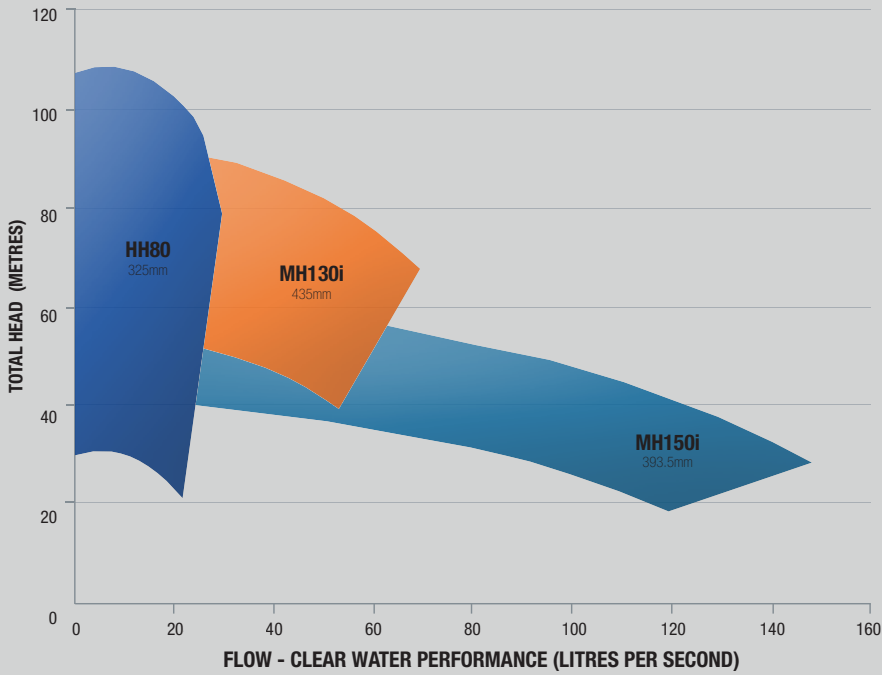
The Bunded steel Skid base and Polyethylene Fuel Tank can be easily drained and flushed out if necessary, and the entire canopy can be quickly removed for major maintenance.

QSM pump sets can be fixed to a galvanised skid base or bolted onto a twin axle galvanised trailer. If appropriate, the trailer system can be fitted with hose racks to store 10 lengths of suction hose, and 100 metres of layflat hose.



ALLIGHTSYKES

QUIET SOLUTION (QSM) RANGE



QSM FEATURES

- Impact resistant polyethylene panels, roof, vents & doors
- Panels easily removed for maintenance
- 67dBA @ 7m
- Single point Lift frame
- Steel Bunded Chassis
- Fork tynes
- 345 Litre polyethylene fuel tank
- Emergency Stops on each side
- Lockable Door handles
- Vertical or Underslung discharge
- Light Weight
- Corrosion Resistant
- Custom colours available multiple orders (5+)

MODELS AVAILABLE

- CP100i
- CP150iC
- CP150i
- CP220i
- CP250i
- MH130i
- MH150i
- HH80
- WD100i & WD150iC Wellpoint

APPLICATIONS

- Municipal
- Construction
- Environmental
- Pipeline & Drilling
- Solids Laden Liquids
- Ground De-watering
- Rental
- Mining
- Quarries
- Industrial
- Sludge
- Slimes