

ALLIGHTSYKES

SEWER & WASTE RANGE

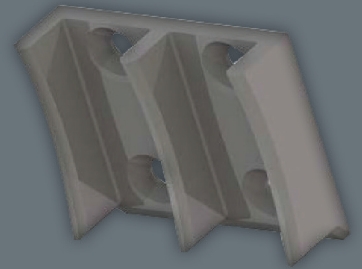
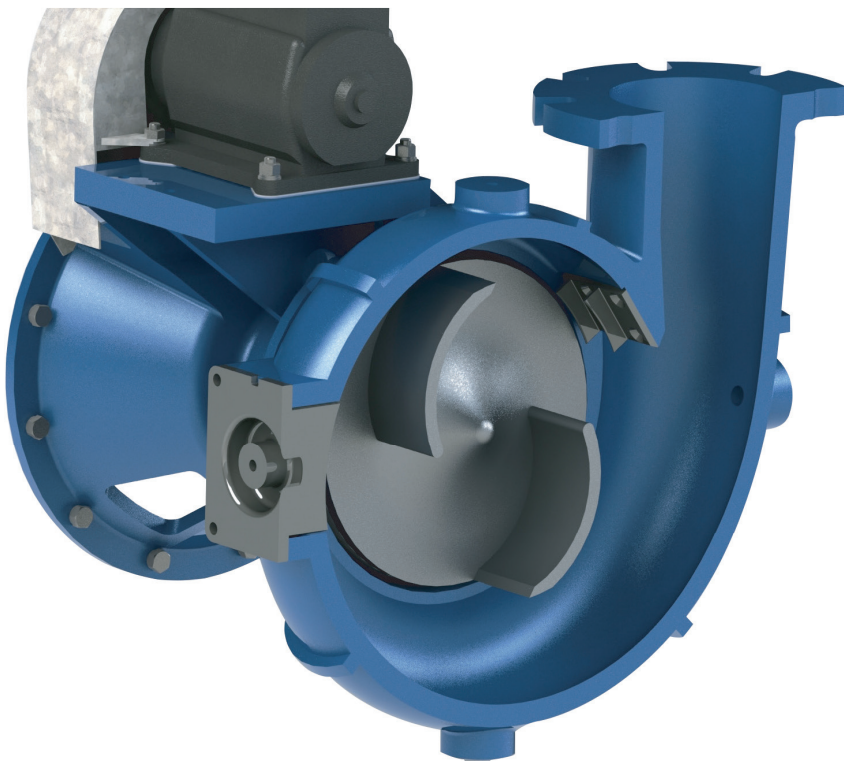


Specifically designed for sewer and waste water applications, the patent-pending SW range is capable of pumping large solids up to 100mm, chops and shreds debris, rope, and other stringy materials that normally partially or fully clog pumps.

The SW pump range boasts an array of new and exciting features to ensure optimum pump performance in times of need. To test and prove the SW design elements, Sykes Pumps have carried out extensive field trials with various water authorities with excellent results and feedback.

SW FEATURES

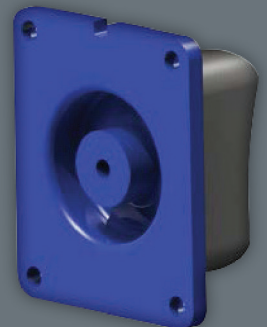
- The shredder claw is designed to tear and shred stringy material that would normally wrap around the impeller and clog the pump.
- Cutter pockets in the front wear plate chops and shears larger objects allowing them to be passed through the pump.
- The inspection insert is designed to allow easy access to the volute chamber enhancing maintenance and repair activities.
- The impeller is a semi open non-clog design capable of handling large solids.
- The SW pumps are based on the market leading Sykes CP range with significant commonality and interchangeability of key components.



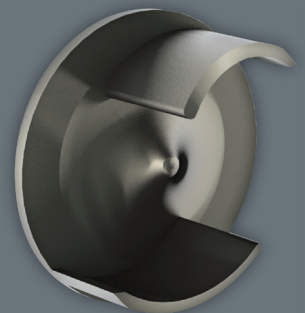
SHREDDER CLAW



CUTTER POCKET



INSPECTION INSERT



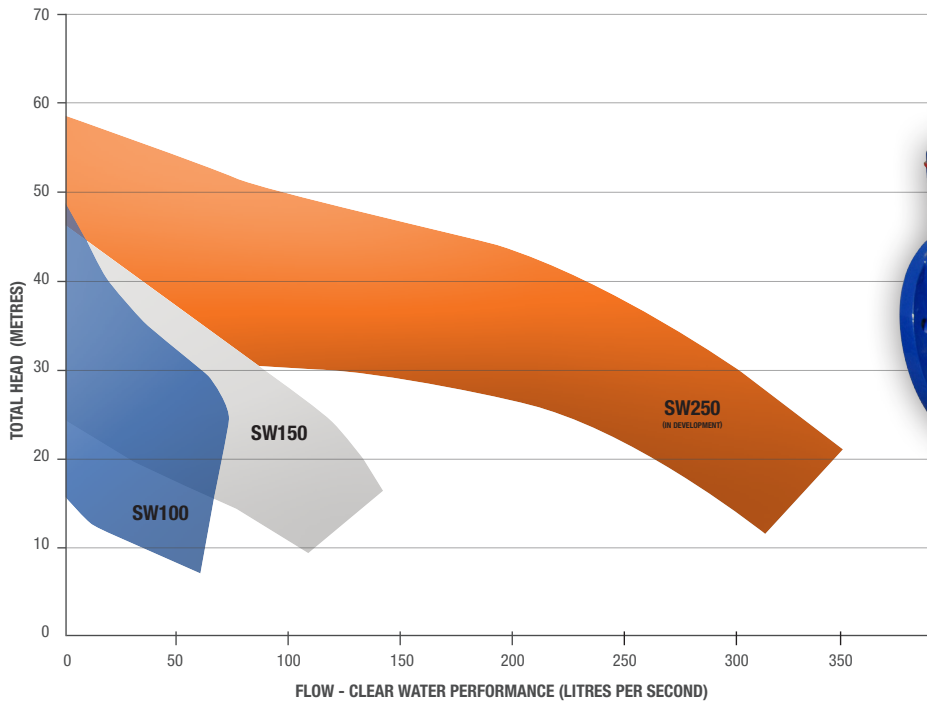
NON-CLOG IMPELLER

ALLIGHTSYKES

SEWER & WASTE RANGE



The SW pumps, being based on the Sykes CP range, inherit the proven heavy duty and robust pump design. The SW pumps also have fitted as standard, 316 grade stainless steel (CF8M) pump internals ensuring maximum corrosion resistance. Sykes extensive industry experience has proven that 316SS pump internals prolongs pump life and provides extended optimum performance. The ability to re-set front & rear clearances, ensuring best pump efficiency, has been retained for the SW pump range.



SW100 SW150 SW250

Connections (mm/in)	100x100/4x4"	150x150/6x6"	250x200/10x8"
Maximum Head (m/ft)	49/161'	46/151'	58/190'
Maximum Suction (m/ft)	9/30'	9/30'	9/30'
Maximum Flow (Lps/GPM)	75/1188	146/2314	360/5706
Solids Handling (mm/in)	76mm/3"	90mm/3.5"	100mm/4"

OPTIONAL EXTRAS

- Acoustic canopies
- Road registerable trailer
- Heavy duty skid
- Pump monitoring sensors with internet link
- Larger fuel capacities
- Fully bunded fuel tanks